

Bloom Benefits

Bloom offers a new and improved approach to warehousing. Our new build ultra-urban locations combined with our enhanced, design-led, sustainable specification, offers the following unique benefits:



Energy Savings

On average, operating a Bloom unit will **reduce your operational energy cost by 66%.***



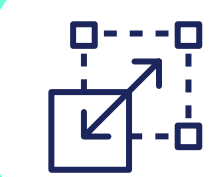
Reduced Carbon Emissions

Logistics businesses can benefit from a **significant reduction in carbon emissions** by operating a Bloom warehouse.



Connectivity

Our warehouses are prioritised on location, facilitating closer proximity to customers, **enhanced PTAL ratings** and **3x reduction in fuel savings.****



Flexible

Flexible relocation clauses allows for **flexibility to move or expand** across our portfolio & early access to new sites.



Smart Governance

Specialist data driven **ESG technology** in all warehouses, maximising efficiency and transparency for customers.



Sustainable

Highly sustainable developments ensuring greener operations with minimum **BREEAM Excellent & EPC A+**.



Supportive

Dedicated customer account manager and **24/7 access** to property management.



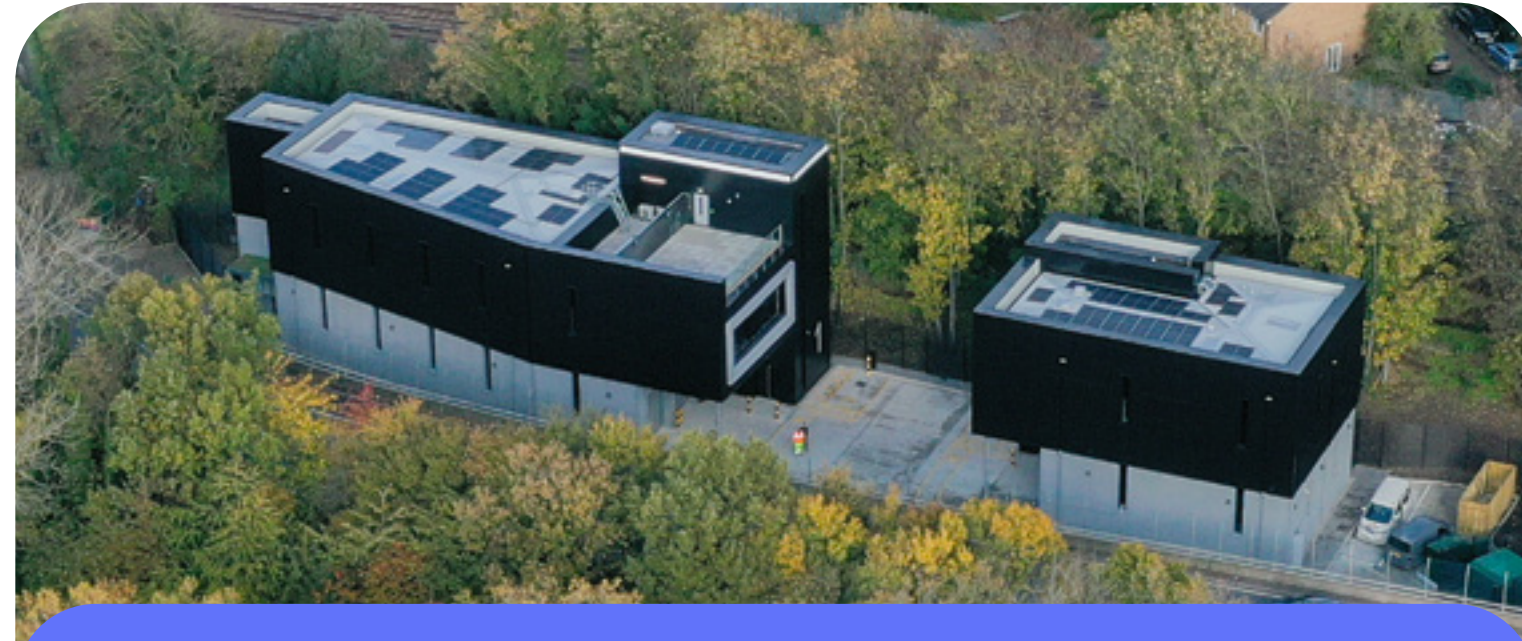
Collaboration

Exclusive access to Bloom customer portal and customer directory.

* Based off a similar unit with an EPC rating of C or lower.

** Fuel saving reduction based off Bloom Camberwell, using Motion Consultants Ltd transport data and vehicle movements.

Our Properties



Bloom Hackney

4,635 - 14,940 sq ft of modern, purpose-built, Grade A warehouse space. **Available now.**



Bloom Camberwell

3,575 - 52,495 sq ft of modern, purpose-built, Grade A warehouse space. **Available Q3 2024.**



Bloom Brixton

3,910 - 35,417 sq ft of modern, purpose-built, Grade A warehouse space. **Available now.**



Bloom Greenwich

4,790 - 36,005 sq ft of modern, purpose-built, Grade A warehouse space. **Available now.**



Bloom Park Royal

2,198 - 7,000 sq ft of modern, newly refurbished, Grade A warehouse space. **Available now.**



Bloom Fulham

3,617 - 36,866 sq ft of modern, newly refurbished, Grade A warehouse space. **Available Q4 2024.**